

**INNOVATIVE EQUIPMENT AND  
INNOVATIVE RESOURCE  
SOLUTIONS**

# **E-CLIPS<sup>®</sup> EX300**



- LOW GROUND DISTURBANCE
- HIGH-SPEED MOBILITY
- OPERATOR COMFORT & CONTROL
- RISLEY CUTLINE<sup>™</sup> ATTACHMENTS
- MULTI-PURPOSE INDUSTRIAL DESIGN

• **OILFIELD • PIPELINE • MINING •**

Step Ahead!





# E-CLIPS™ EX300 PRODUCT FEATURES

## POWER

CUMMINS™ QSL 9 LITRE TIER 3, 300HP @ 2100 RPM (BULGE 325HP @1900RPM)

- SPARK ARRESTOR MUFFLER
- 24 VOLT 2-12 VOLT BATTERIES
- 140 AMP ALTERNATOR
- FLEXXAIRE™ FAN SYSTEM (AUTO/MAN-REVERSING, VARIABLE PITCH)

## POWER TRAIN

- TRANSMISSION – DUAL-PATH CLOSED LOOP HYDROSTATIC (SAUER-DANFOSS™)
- TRACK DRIVE – LOHMAN GFT-40 WITH REXROTH MOTORS
- HYDRAULIC FILTRATION – FULL FLOW
- ATTACHMENT – HIGH PRESSURE/FULL FLOW FILTRATION

## TRACK

- “CHAINLESS” STEEL FLEXTRAC™
- INTERLOCKING 28” WIDE, SINGLE GROUSER (STEEL) PADS (TRACTION LUG READY)
- RUBBER BUSHING SUPPORTED WITH HIGH STRENGTH PINS

## SUSPENSION

- DYNAMIC TRANSFER SUSPENSION (D.T.S)™
- FLOATING ROLLER GUIDES
- GREASELESS ROAD WHEELS

## OPERATORS CAB

- RUBBER ISOLATED MODULE – WCB CERTIFIED, ROPS, FOPS APPROVED
- PRE-FILTERED AND PRESSURIZED AIR FOR OPERATOR COMFORT
- AIR CONDITIONER AND HEATER
- TINTED MARGUARD™ WINDOWS AND DOORS
- AM/FM CD SATELLITE READY STEREO
- 2 - 12 VOLT POWER POINTS
- SEAT
  - AIR RIDE, FULLY ADJUSTABLE LUMBAR SUPPORT, ARM RESTS AND LAP BELT HARNESS
- CONTROLS
  - ELECTRONIC JOY STICKS (6 SPEED VARIABLE CONTROL) FOR PROPULSION
  - CRUISE CONTROL
  - TRUTRAC™ TRACK SPEED COMPENSATOR
  - PROGRAMMABLE HANDLE FUNCTIONS FOR OPERATOR AND ATTACHMENTS
  - MACHINE MANAGEMENT – ELECTRONIC DISPLAY GAUGES AND FUNCTIONS
- ACCESS
  - HYDRAULIC ACTUATED UNLOCK, LIFT, RELEASE AND LOCK FUNCTIONS
  - REVERSIBLE DOORS

## CAPACITIES

- 140 US GALLON FUEL CAPACITY(530 LITRES)
- 36 US GALLON OIL RESERVOIR (136 LITRES)
- WEIGHT W/O HEAD: 30,400 LBS (13,789 KG)

## SPEED

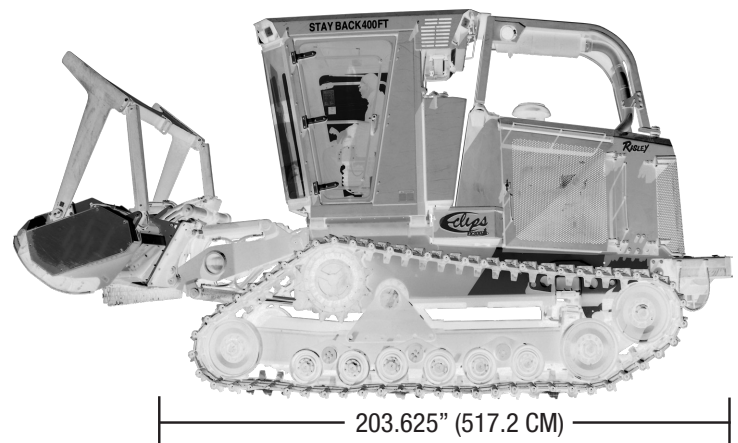
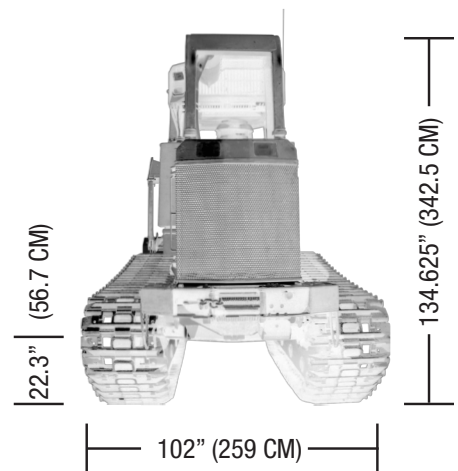
- 6 MPH (12 KPH) FORWARD/REVERSE

## ATTACHMENT BOOM

- MULTI-PURPOSE ATTACHMENTS DESIGNED FOR CUSTOM OR REGISTERED SOLUTIONS

## OPTIONAL EQUIPMENT

- RISLEY CUTLINE™ ATTACHMENTS
- ICE LUGS
- GPS



CALL 1-780-532-3282 OR TOLL FREE 1-866-783-7243  
OR VISIT US ONLINE AT [WWW.RISLEYEQUIPMENT.COM](http://WWW.RISLEYEQUIPMENT.COM)

Step Ahead!™

